

Newell Highway Upgrade – Heavy Duty Pavement Upgrade, Narrabri to Moree



Australian Government

BUILDING AUSTRALIA



New pavement works in Bellata

The Australian and NSW Governments are jointly funding the \$261.17 million Newell Highway heavy duty pavement upgrades between Narrabri and Moree. These upgrades will improve safety for motorists and reduce future maintenance requirements and costs.

Construction Update

The Newell Highway Upgrade between Narrabri and Moree continues to make significant progress with construction now underway in all four sections including Section 3 at Bellata, Section 5, just south of Moree and Section 1 and 2 north of Narrabri.

Milestones in the second half of 2023 include major traffic switches at Section 5 just south of Moree and construction of the first stage of bridge sized drainage structures including at Clarks Gully.

In Section 3 near Bellata, kerb and the footpath tie-in on the eastern side of the highway is complete with the remaining kerb and guttering activities through

Bellata expected to be completed by early 2024. Stormwater drainage works are also now complete.

In Section 1 and 2, north of Narrabri, temporary works have commenced including material excavated (cut), and the stabilisation of earthworks.

Work has also started in Section 1 at the Class 3 Heavy Vehicle Rest Area. The new Class 3 Rest Area will include parking for 20 heavy vehicles (up to 48.5 metres long), separate parking for 10 light vehicles and multiple caravans.

Work on the Murrumbilla lane intersection improvement and realignment has also commenced which will include a large new culvert under the highway.

Design modifications

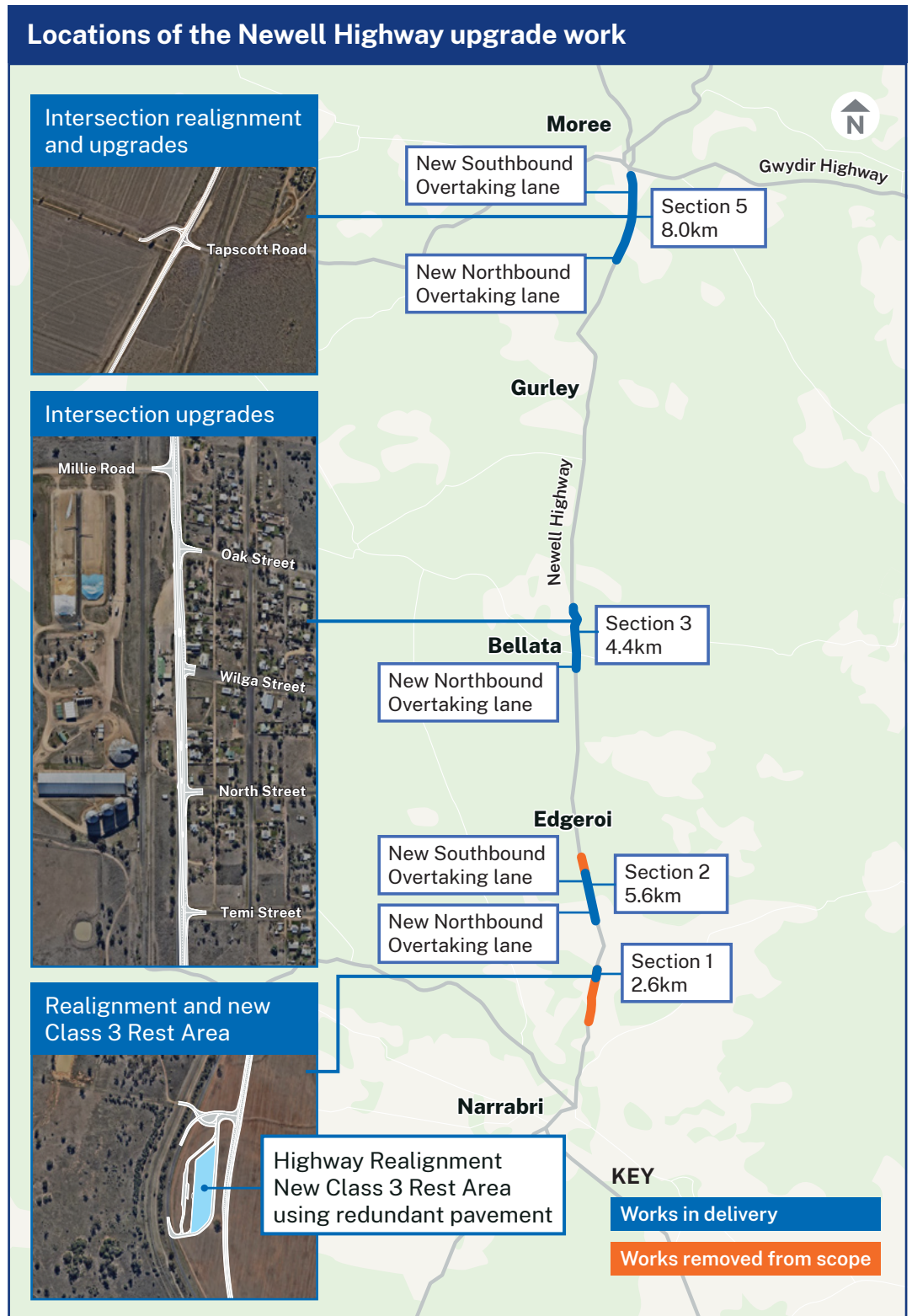
Due to consecutive years of above average rainfall prior to commencing construction, combined with flooding in the area since the project commenced, there have been significant impacts to the project.

To ensure we meet our commitment of completing the project on time and on budget, Transport has modified the design in Sections 1 (Narrabri) and 2 (Edgeroi) where work has not yet commenced. There will be no impacts in Sections 3 (Bellata) and 5 (south of Moree) already underway.

The project will continue to deliver on its key safety and productivity features including intersection improvements, widening of road shoulders, the provision of five additional overtaking lanes, as well as a new formal rest area near Narrabri.

Transport will continue to engage and work closely with stakeholders and the community as work continues.

Please see an updated map which shows the modified sections in Section 1 and 2.



If you would like to speak to the project team, please call **1800 741 636** (option #3) or email us at newell.upgrade@transport.nsw.gov.au.

Brushing up on local Aboriginal painting skills

Celebrated Gomeroi artist Mona Fernando Munro, led an army of local kids at the Shae Academy in a school holiday painting work shop supported by Transport and lead contractor Fulton Hogan.

Project staff joined 30 kids as part of their school holiday program at Moree's Shae Academy for a masterclass in local Aboriginal painting techniques. Mona presented the framed pieces representing the totems of Moree and Mungindi to the project team at a special event held in Moree.

"It's a gesture of thanks to the project folk for making the time to get to know our community. It means a lot to us to have support for our community, such as holiday workshops and putting on lunches for the kids," Mona said.



Local kids and Fulton Hogan staff, enjoying the local Aboriginal painting masterclass

Morning Tea with local landowners near Narrabri

With work ramping up north of Narrabri, Transport and lead contractor Fulton Hogan hosted a morning tea with local landowners and members of the Narrabri Local Area Land Council (LALC). The event was a great opportunity for the project team to meet with community and provide an update on key construction activities over a cup of tea.

Narrabri Local Aboriginal Land Council and local elders shared their stories about the rich cultural heritage and biodiversity of the local area and the Kaputar Ranges to the east, in the company of local landowners whose properties are adjacent to the project corridor. It was also an opportunity to promote the local employment and business opportunities in the Narrabri area.



Fulton Hogan Community Manager Brendan Barrett with local landowners

Meet the Crew: Wail Rudwan – Site Engineer



Fulton Hogan Site Engineer, Wail Rudwan

Wail has worked as an engineer on projects across NSW and Queensland, but few have thrown up as many challenges as the Newell Highway Upgrade.

Wail is responsible for Section 5 which is 8.8 kilometres in length just south of Moree. His role involves

the planning and delivery of earthworks, lime stabilisation, pavements including bitumen seal, asphalt and installing safety barrier systems.

"Talk about the land of droughts and flooding rains! We have had it all in the time we've been working on this project," Wail said.

What do you love about your role?

Engineering is a terrific career if you want to get out and see the country. What surprised me most about the north-west plains is the scale of agriculture out here; it blows my mind. Contending with the huge farm machinery and wide loads we get up and down the highway, while upgrading a main road is yet another one of those challenges you don't get to see in many other places.

What is your favourite part of working on the project?

The people of course. I respect and admire the community aspect of my job and learning about all the diverse local culture and history. Runner up to that would be having a splash around in the thermal pools when it's freezing in winter. That's gold.

Investing in our local communities

Wherever possible, the project team is sourcing what it can locally, injecting back into the local economy.

Narrabri and Moree businesses are already supplying a suite of goods and services, including fresh water, office supplies, quarry products, electrical and plumbing services, trucks, signage, and equipment hire, accommodation, catering, traffic control and safety equipment.

Local businesses can also still offer goods and services to the project by contacting the project team on **1800 741 636** (option #3) or by emailing newell.upgrade@transport.nsw.gov.au.



676 people

have been inducted on the project including 6 full time Aboriginal workers and 25 sub-contractor or labour hire personnel



61 local businesses

engaged across Narrabri and Moree shires



2.4m total spend on Aboriginal businesses (8.24% of total eligible spend)



Lime stabilisation of the new highway base in Section 5 south of Moree

February 2024

Privacy Transport for NSW ("TfNSW") is subject to the Privacy and Personal Information Protection Act 1998 ("PIIP Act") which requires that we comply with the Information Privacy Principles set out in the PIIP Act. All information in correspondence is collected for the sole purpose of assisting in the delivery this project. The information received, including names and addresses of respondents, may be published in subsequent documents unless a clear indication is given in the correspondence that all or part of that information is not to be published. Otherwise TfNSW will only disclose your personal information, without your consent, if authorised by the law. Your personal information will be held by TfNSW at 51-55 Currajong Street Parkes NSW 2870. You have the right to access and correct the information if you believe that it is incorrect.

Bellata Christmas Party

After a huge 2023, lead contractor Fulton Hogan and their contractors and sub contractors dipped into their pockets to help fund a local Christmas event for Bellata. Bellata has been impacted by major construction activity all year and Fulton Hogan felt it was an opportunity to give back to the community. Organiser Jo Dufty said "We want to say a big thanks to all the construction businesses who chipped in to make it such a memorable event for us in the Bellata area. There were some very happy residents, particularly the kids. It was a real treat for everyone."



Bellata local kids receiving gifts from Santa

Contact us

For more information or to subscribe for email updates contact:



1800 741 636 (option #3)



newell.upgrade@transport.nsw.gov.au



nswroads.work/n2m



This document contains important information about road projects in your area. If you require the services of an interpreter, please contact the Translating and Interpreting Service on **131 450** and ask them to call the project team on **1800 741 636**. The interpreter will then assist you with translation.